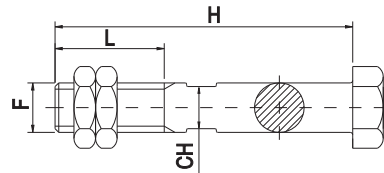


I Perni per portoni scorrevoli

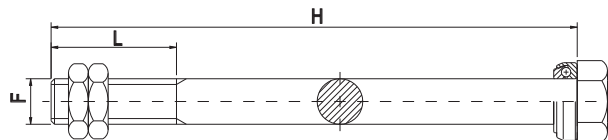
- UK Pins for sliding doors
D Bolzen fuer Shiebe Türen
F Pivot pour portes pliantes et coulissantes
E Eje mediano para puerta corredera
RUS Болт для складных и сдвижных ворот



Articolo - Article		FxL	H	CH		
Riferimento - Reference		UNI	mm		N°	kg
P 110	IT 16 11 L0	M 16 X 40	110	13	30	7
P 120	IT 20 12 L0	M 20 X 45	120	15	20	8,1

I Perni per portoni a libro

- UK Pins for folding doors
D Führungseinheiten mittel und groß
F Plaque de guidage réglable - moyenne et grande
E Placas regulables en altura con 4 rodillos guía mediana y grande
RUS Болт для складных и сдвижных ворот



Articolo - Article		FxL	H		
Riferimento - Reference		UNI	mm	N°	kg
P 16/210	IT 16 21 L0	M 16 x 60	210	10	4,1
P 16/260	IT 16 26 L0	M 16 x 60	260	10	4,8
P 20/250	IT 20 25 L0	M 20 x 60	250	10	7,3
P 20/280	IT 20 28 L0	M 20 x 60	280	10	8
P 20/300	IT 20 30 L0	M 20 x 60	300	10	8,7
P 20/320	IT 20 32 L0	M 20 x 60	320	10	9