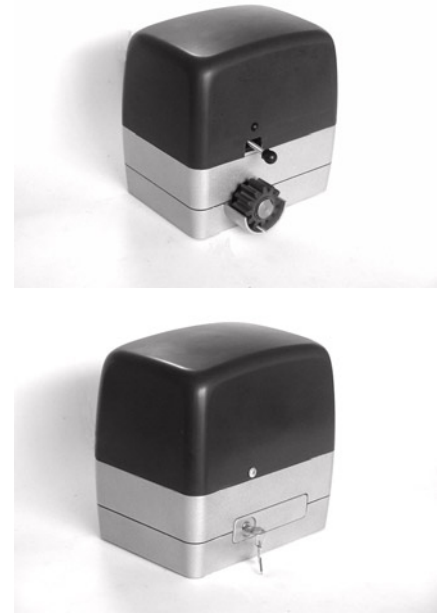


Installation Manual: "SIMPLY" LOW VOLTAGE Motor-reducer for sliding gates up to 300Kg.

The "SIMPLY" motor-reducer is made of a solid aluminium pressure casting block and a lid of ABS, internally there is an electric motor, a transmission system and a control unit. The reduction group works constantly with a greasy lubricating fluid. The control unit is able to conduct several working logics, adjusting anti-crushing couple and all safety and controlling devices.



Dati tecnici	Données techniques	Technical data	Datos tecnici	SIMPLY
Portata	Poids max.	Max weight	Peso max	Kg.300
Alimentazione	Alimentation	Power	Alimentaciòn	24 v
Potenza max	Puissance max	Max power	Potencia max	250 w
Condensatore	Condensateur	Condensor	Condensator	-----
Velocità	Vitesse	Speed	Velocidad	15mt/min
Pignone	Pignon	Pinion	Pinòn	M4-Z12
Temp. di Funz.to	Temp. de fonction	Function Time	Temp. de funcion	110°
Giri motore	Tour moteurs	Motor speed	Rotaciòn motor	-----
Peso	Poids	Weight	Peso	Kg.8
Ampere	Ampere	Ampere	Ampere	1,5

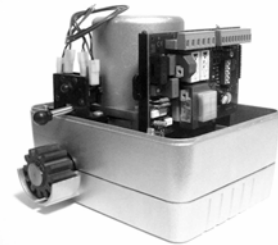
PRELIMINARY WARNINGS :

First of all, fixed and mobile parts of the gate are set in accordance with the law in force. Control that

- 1) The door is solid and rigid enough.
- 2) The inferior guide flow is perfectly straight.
- 3) The superior guide is made and positioned in such a way that the gate is perfectly vertical.
- 4) The limit switch mechanical stops are installed.

TO OPEN "SIMPLY"

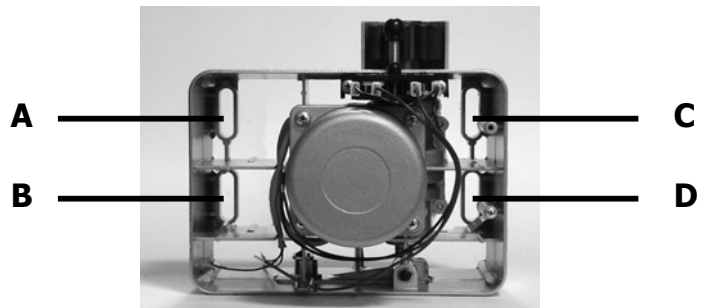
Loosen the screw on the lid and lift it on the same side as shown in the diagram.



MOTOR-REDUCER INSTALLATION

Prepare a flat cement base that is raised from ground level by at least 40-50 mm according to the measurements in photo 2. Foresee the outcome of two flexible tubes for the passage of electrical wires, corresponding to the entrance of the motor-reducer.

"SIMPLY" can be fixed to the ground by 4 anchorage brackets corresponding to the pre-set holes « A-B-C-D » .

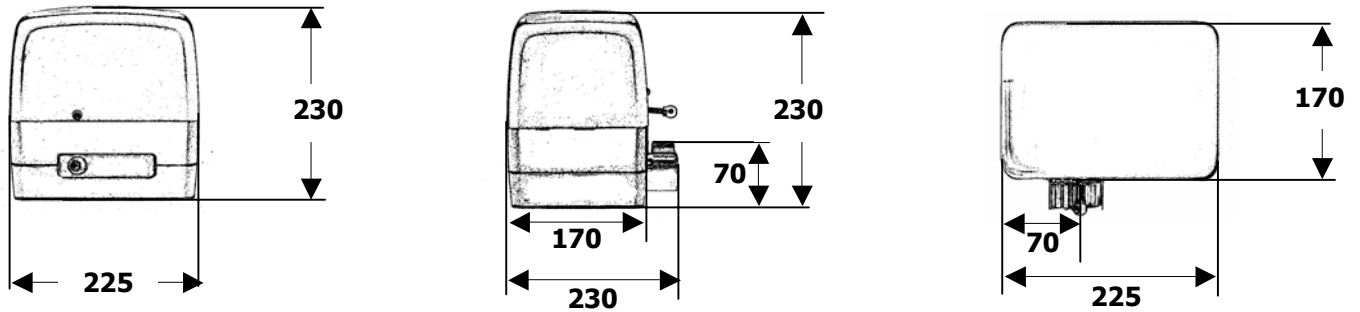


LEVER UNBLOCKING SYSTEM

In case of power failure, the motor-reducer can be unblocked turning the supplied key in a clockwise direction (towards right, see photo) and pulling the lever 90°. To block the motor-reducer bring the unblocking lever back to starting position and turn the key in an anti clockwise direction.



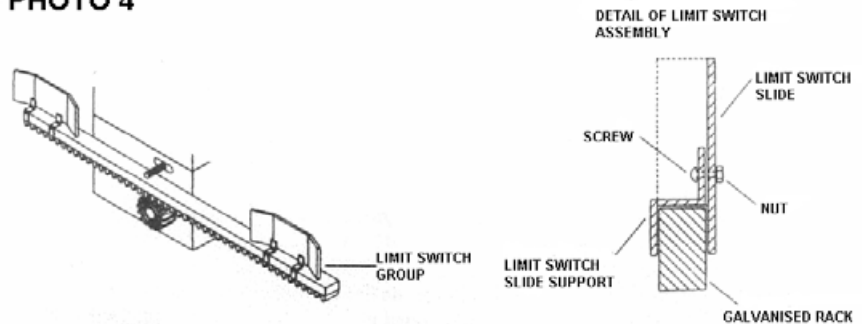
DIMENSIONS IN MILLIMETRES



INSTALLATION OF SHEET-METAL FOR LIMIT SWITCH

Tighten the metal sheets to the angle bar supplied, insert the sheets in the rack so that the gate does not slam the mechanical stops of which it is equipped (see photo 4).

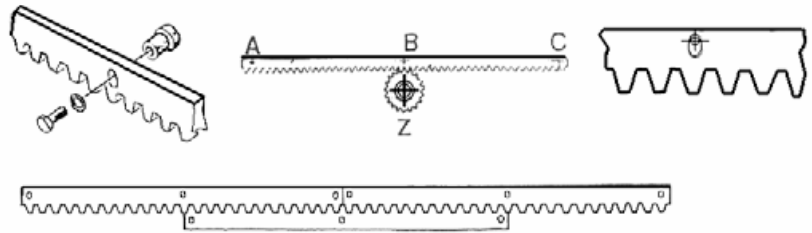
PHOTO 4



RACK ASSEMBLY

Unblock the motor-reducer and open the gate completely. Tighten the pawls to every rack element ensuring that they are positioned in the superior part of the hole. Lean the rack part of the pinion of the motor, bring to level and weld the pawls to the gate. Repeat the instructions described above for the remaining rack elements to be installed. Check that all the elements are perfectly aligned and that the gate carries out its stroke without strain. The whole rack must be lifted by 1 or 2 mm. Avoid burdening the motor pinion with the weight of the gate.
For NYLON racks, proceed by screwing the rack directly onto the gate.

PHOTO 5



MAINTENANCE

For the "SIMPLY" motor-reducer particular maintenance is not necessary, although periodically check the safety devices. The average maintenance period is 1 year. Lubricate the wheels of the gate.

WARNINGS

Handle the motor-reducer with care during assembly and dismantling to avoid accidents occurring to those using it or to any other people present. The weight of the motor-reducer is about 8 Kg.

During maintenance, disconnect the motor-reducer from the power supply using the differential switch. Do not perform any operations and call an authorised technician.

Do not touch the motor-reducer with wet hands.

Do not pull the power wires.

If the motor-reducer has been used intensively, do not touch the motor unless you are sure that it has cooled down.

Keep away from activation ray when the gate is moving.

Use the gate only when it is completely visible.

- **The door flowing speed must not exceed 12mt/min, according to UNI 8612 regulations.**



**Installation must comply with the current UNI 8612 and CEI accident prevention regulations.
In any case, provide a 6A differential switch with 0.030 A threshold.**

Installation must be carried out only by qualified personnel, in compliance with the law No. 46 of March 5, 1990 and its successive modifications and integration.