

## Pal Gate SG-BT1-O

Based on Bluetooth smart technology, the Smart PAL BT is the perfect product to operate your gate, garage door, electric locks by a powerful Application.

### Features and Advantages :

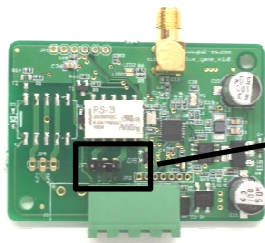
- Managed through a Web interface and app.
- Very small physical size 70X50 mm.
- 2 Indicator lights
- You can set up multiple administrators and authorized users for optimal control.
- There is no limit to the number of systems are managed.

### Lights

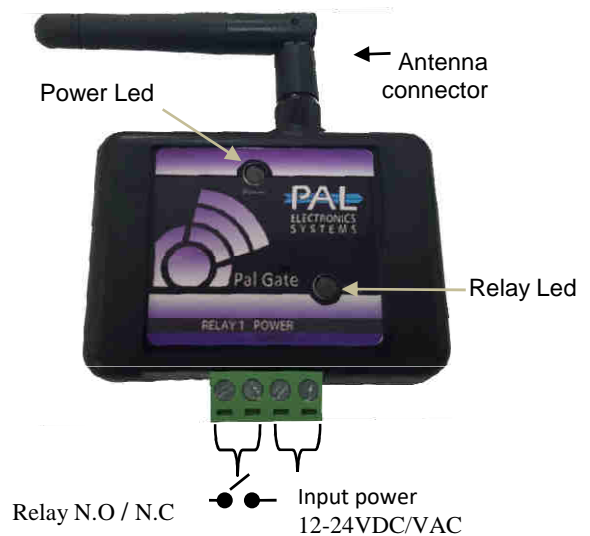
Power	System is on
Relay	Blinks on opening command

### Technical Specifications

Operating Voltage	12-24V AC/DC
Operating Frequency	2.4GHz
Supported Devices	IOS- Starts with IOS8 version and supported from 4S devices Android – starts with 4.4 version and support devices from 2013
Working conditions	-40°C - +85°C
Power Transmission	7 dBm



Relay mode can be changed by jumper N.O / N.C



### System settings by the app :

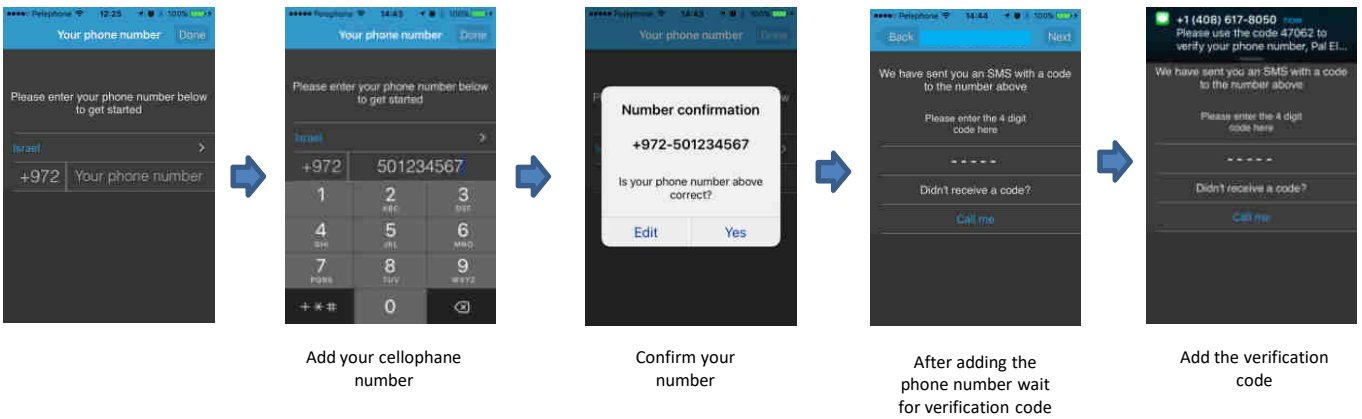
#### Primary Login:

This application must be first installed from the App Store / Google play by searching for the name PalGate or scan this QR Code for direct link.

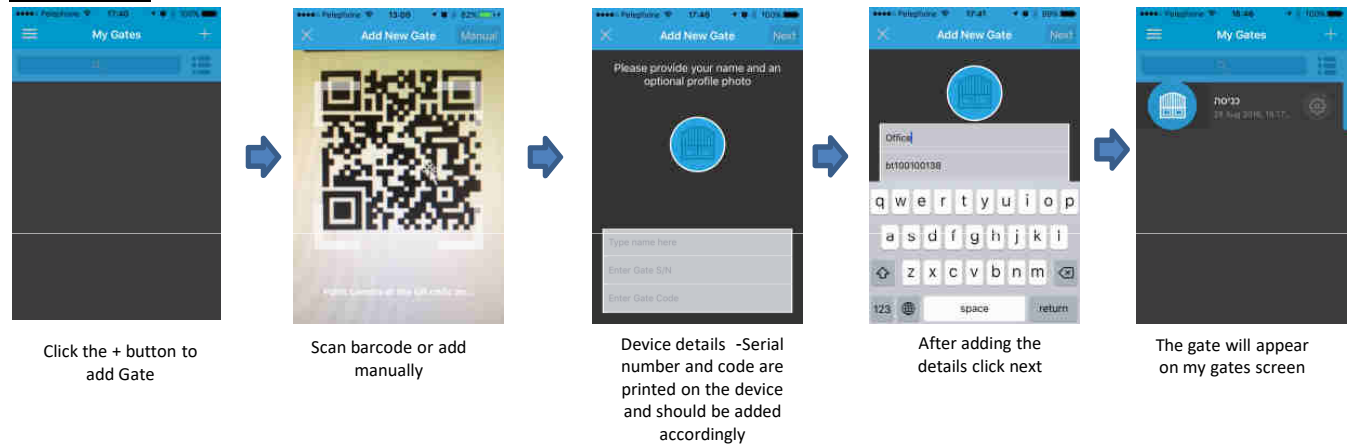


Run the application and to act according to the instructions :

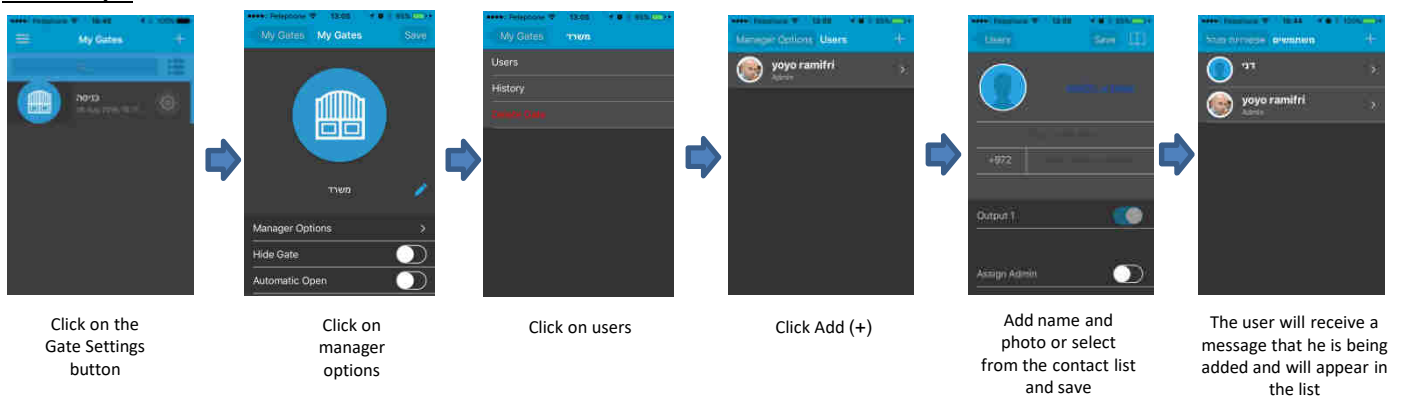
## installation:



## Gate setting:



## Add User/s:



## Important Information:

- Requires stable power supply source preferably DC transformers.
- Avoid installation in metal boxes.
- Protect the unit from humidity and insect infiltration.